

## AIR PRESSURE SENSOR

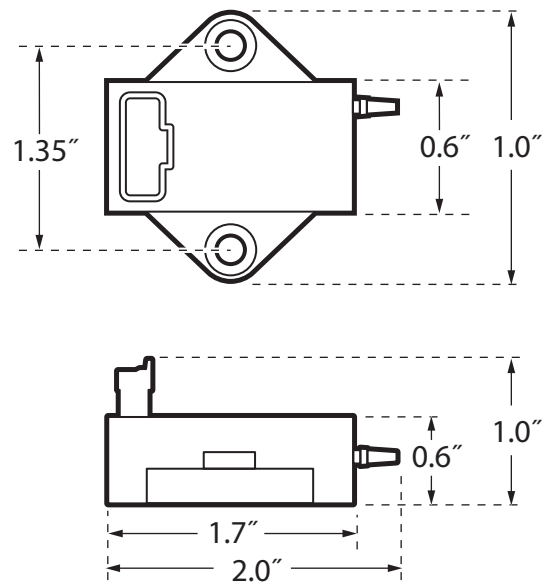
- **Accurate Air Pressure Measurements and Monitoring.**
- **Heavy Duty.**
- **End or Top Port Positions Available.**
- **Industrial Grade.**
- **Water Proof.**
- **Data Output.**



### DTI AIR PRESSURE SENSOR SPECIFICATIONS

|                              |                          |
|------------------------------|--------------------------|
| Sensor type: .....           | Electropneumatic         |
| Sensing Range: .....         | 0 - 50 KPA               |
| Sensitivity .....            | 90 mV/KPA                |
| Response Time .....          | 1.0 ms                   |
| Maximum Pressure .....       | 200 KPA                  |
| Input Voltage: .....         | 5 VDC                    |
| Current: .....               | 7 mADC                   |
| Output: .....                | 0.2 - 4.7 VDC            |
| Accuracy: .....              | +/- 0.1125V              |
| Termination: .....           | JST WPJ Series connector |
| Operating Temperature: ..... | -40°C to 125°C           |
| Storage Temperature: .....   | -40°C to 125°C           |

### DIMENSIONS:



Dragan Technologies Inc.  
[www.dticanada.com](http://www.dticanada.com)

41 Omands Creek Boulevard, Winnipeg, Manitoba, Canada, R2R 2V2  
 phone: 204.775 2445 info@ditcanada.com